



Our digital and data services experts solve complex data problems and empower organisations to harness the potential of data to help build a better world.

---

## MAPLINK PRO DATA SHEET



### UK Office:

Envitia Ltd,  
North Heath Lane,  
Horsham, West Sussex,  
RH12 5UX, UK



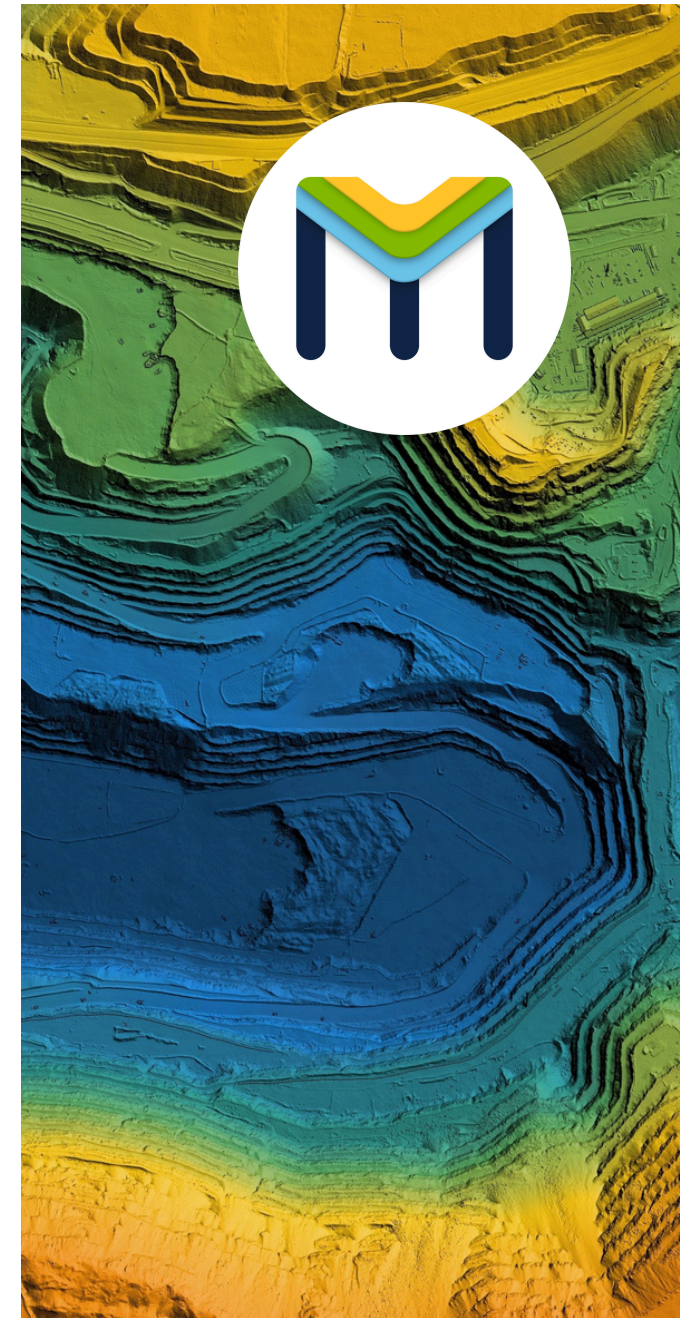
### US Office:

Envitia Inc,  
11710 Plaza America Dr,  
Suite 2000,  
Reston, VA 20190 US



### Contact Us:

USA: +1 703 871 5255  
UK: +44 1403 273 173



# CONTENTS

**COMPANY INTRODUCTION** 01

**MAPLINK PRO 11** 02

**SDK FEATURES** 03

**MAPLINK PRO ADVANTAGES** 04

**DEVELOPMENT ROADMAP** 05





## COMPANY ABOUT US



We are one community, all determined to do the right thing by our clients, partners and colleagues.

### OUR COMPANY STORY

With deep technical expertise borne out of 35 years of geospatial data heritage, Envitia is a leading provider of consultancy, engineering and software, helping our clients drive business impact from data. Underpinning our exceptional company growth is our talented teams' ability to consistently delight clients. Our focus is on building long-term partnerships with clients. Integrity, teamwork and excellence are woven into the fabric of our daily operations and this means Envitia is not just a collaborative and pleasurable company to work with, it's also an exceptional place to work.

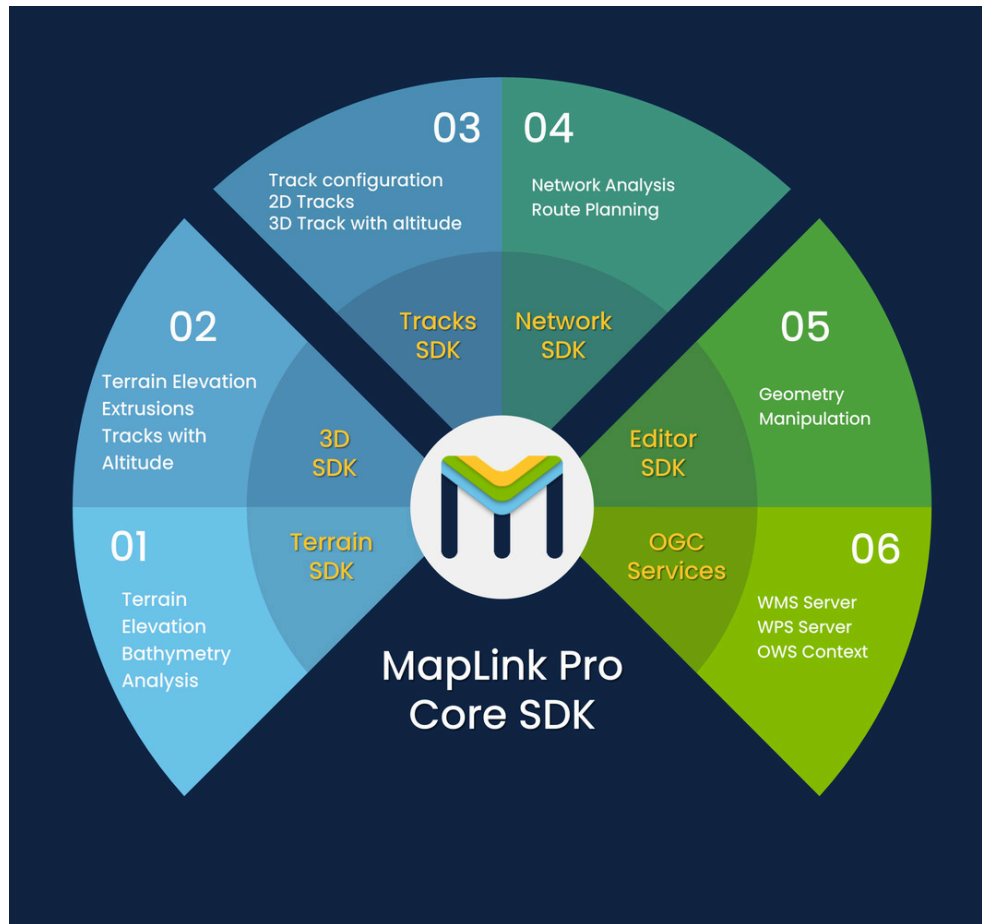


**Dom Eade**

Chief Executive Officer

## INTRODUCTION

# MAPLINK PRO 11



## MAPLINK PRO 11 INTRODUCTION

Envitia's MapLink Pro is the global leader in dynamic mapping visualisation software. It is utilised by many of the most well-known operational applications from developed leading international systems integrators.

Renewed to meet modern standards, MapLink Pro provides developers with support for a broad range of platforms, operating systems, and compilers to utilise their development environment of choice.

MapLink Pro comes with development walk throughs, documentation and sample programs, allowing software developers to rapidly create new mapping applications or extend an existing code base to include advanced geospatial functionality.

## SDK FEATURES

# MAPLINK PRO 11



### CORE SDK

The Core SDK provides 2D map rendering, support for many military and civilian data formats, support for complex map projects and the ability to track live objects.



### TERRAIN SDK

This SDK provides the ability to analyse gridded data to perform calculations including Viewshed and Line of Sight calculations and the generation of Contour Lines.



### TRACKS SDK

The Tracks SDK provides a complex capability to track and manage large volumes of real-time data feeds.



### 3D EARTH SDK

Uses terrain data types to generate 3D displays, provides the ability to drape 2D maps over terrain data and display live tracks in 3D.



### EDITOR SDK

Provides facilities for the interactive creation and manipulation of vector overlays in both 2D and 3D



### OGC SERVICES PACKAGE

Web services offering open standard interfaces to distribute and share geospatial information over the network or Web

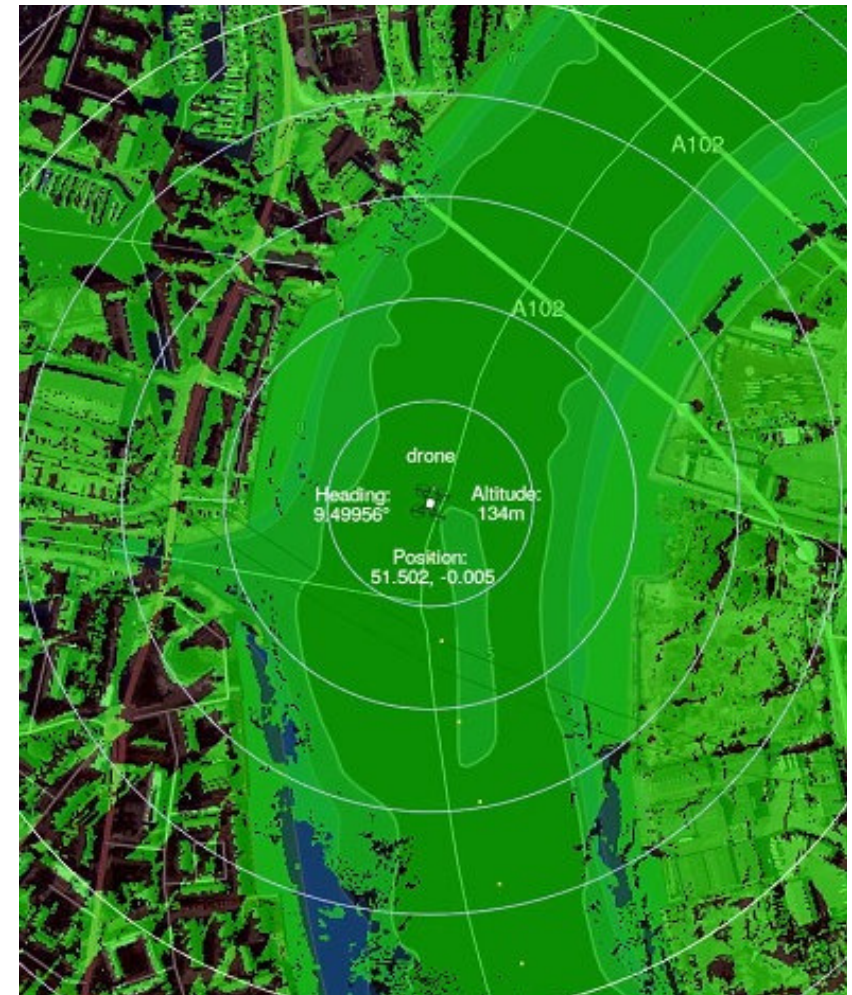
SDK ADVANTAGES

# MAPLINK PRO 11



## MAPLINK PRO 11 ADVANTAGES

- ◆ Save time and cost bringing high-performance mapping apps to market
- ◆ Rapidly deliver apps with advanced map visuals on limited hardware
- ◆ Exploit broad defence and GEOINT data formats and services
- ◆ Free from ITAR restrictions for global deployment flexibility
- ◆ Flexible licensing models to suit varied project requirements
- ◆ Available on Windows, Linux, and Android to reduce development costs
- ◆ Hands-on training tailored to accelerate your solution development goals
- ◆ Annual support with direct access to MapLink Pro engineers
- ◆ Proven in 15,000+ operational apps with 20+ development partners





Scalable map building, flexible runtime styling, updated geospatial format supports.



Centralised and scalable track and event management.



Support for the latest military symbology standards.



Integrated 2D and 3D Views with 3D models and texture support.

## MAPLINK APPLICATION STRUCTURE

MapLink is a set of SDKs that provide a modular and flexible toolkit for developing situational awareness applications with moving map data, imagery, terrain and 3D visualisation.

The SDKs easily integrate into new or legacy software applications, work on a range of operating systems, development and deployment environments and allow for significantly faster software developments cycles.





# ENVITIA



## Driving Data Impact

Empowering organisations to harness the full potential of data